



# Joint stock company “Kaliningrad Sea Commercial port” Multimodal hub for China-Europe-China container transportation







**Kaliningrad Sea Commercial port (JSC “KSCP”)** is the largest port operator of the westernmost Russian region. It is located in the Special Economic zone of Russia – Kaliningrad region bordering on the European Union countries: Lithuania and Poland. KSCP is an ice-free port, which is open for navigation all year round. It is connected with the Baltic sea by a ship canal 43 km long.

Well-developed infrastructure allows the port to handle up to 6 mln tons of cargo per year at its berths. The port has at its disposal one of the largest in the region container terminals with a throughput up to 250 000 TEU per year. Handling operations at the port are performed 24 hours a day including days off and holidays.

#### **The basic characteristics:**

Total area – 66,4 ha

Number of berths – 15

Length of a berthing line – 2550 m

Maximum allowed dimensions of vessels (length/draft): 175m/8 m

Warehouses (including a refrigerated warehouse) – 43 600 sq. m (4 400 sq. m)

Warehouses are equipped with approach ramps and railway access tracks – 18 km.

Open guarded storage area – 212 000 sq. m

There are 3 tanks with 3 000 m<sup>3</sup> capacity each for storing liquid cargo (oil products)

Lifting capacity of gantry cranes - from 5 up to 95 tons

Lifting capacity of loaders – from 1,5 up to 45 tons

KSCP in cooperation with logistic, forwarding, chartering, shipping agency companies etc. renders a full range of services connected with cargo transportation from the consignor to the consignee and vessel anchorage at the port.

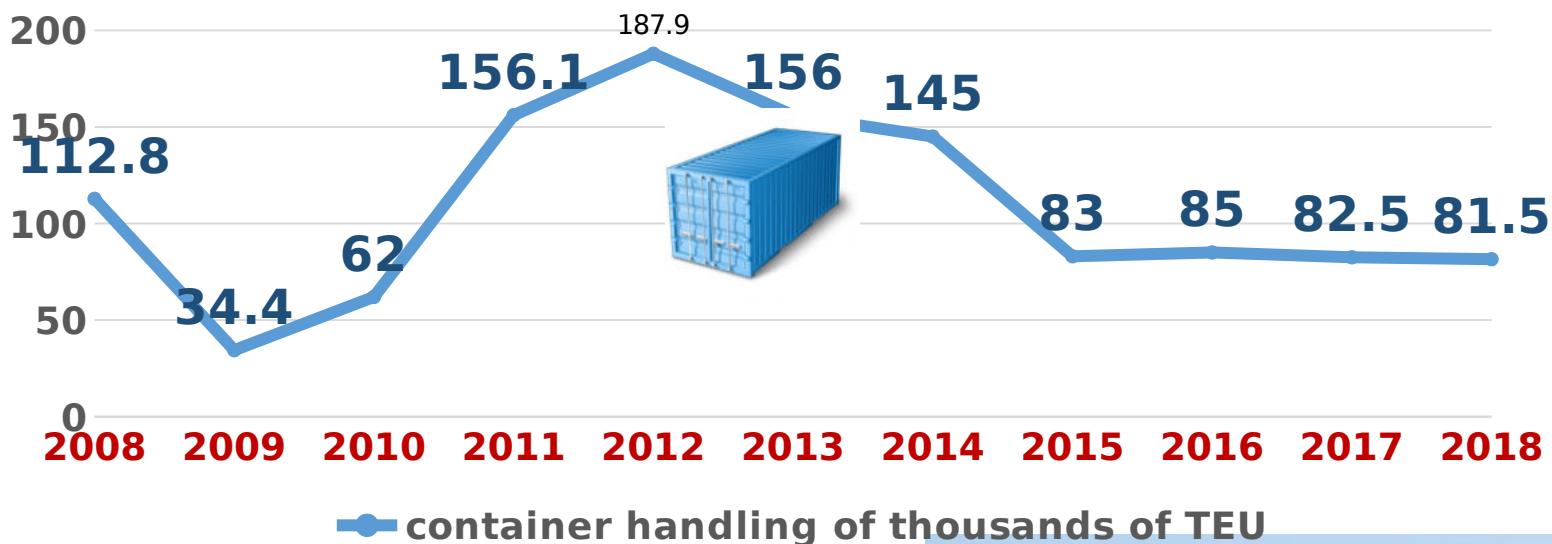




## CONTAINERS

are among the most important cargoes for JSC "KSCP"  
Development and modernization of a container terminal is a vital  
issue of the port development

### Container traffic JSC «KSCP»



The container terminal is comprised of:

- Berth № 18 - 170 m
- Berth № 19 - 275 m
- Open storage area - 130 000 sq. m
- Container completion warehouse - 8 500 sq. m
- Facility for inspection of cargo controlled by Federal Service for Veterinary and Phytosanitary Surveillance - 216 sq. m
- Current supply points for reefer containers - 305 units;

The container terminal provides a full range of services related to container loading/unloading including customs formalities. Loading/unloading speed is 30 containers per hour.



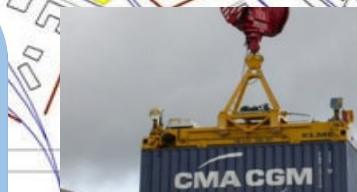




# Technical equipment of the container terminal of JSC «KSCP»



- Gantry cranes (5 units), l/c from 20 to 95 tn
- Modern lifting devices
- Container reach stackers (10 units), l/c 45 tn
- Car port tractors and roll trailers, l/c up to 80 tn
- Forklift trucks of various models, l/c from 1.5 to 45 tn



In the summer of this year, JSC «KSCP» was acquired and installed, and a new gantry crane TUKAN with a max. loading capacity 95 tn was installed on





# The conclusion of memorandums of strategic cooperation with the ports of the Kaliningrad region as part of the implementation of the multimodal transport project in the communication China - Europe - China.

In February 2018, Vienna signed the memoranda of strategic cooperation between the «United Transport and Logistics Company» and the Kaliningrad Railway, a branch of JSC «Russian Railways» with the «Kaliningrad Sea Commercial port», «Baltic Stevedoring Company» and «Rosmorport». The documents were signed by the president of «UTLC» Alexey Grom, the head of the Kaliningrad Railway Viktor Golomolzin, the first deputy general director of the «Kaliningrad Sea Commercial Port» Vladimir Lavrenchuk, the general director of «Baltic Stevedoring Company» Sultan Batov and the director of the North-Western Basin Branch «Rosmorport» Sergey Pylin.



TRANSMARINE



In November-December 2018, «UTLC ERA» JSC (United Transport and Logistics Company - Eurasian Railway Alliance), Kaliningrad Railway - a branch of «Russian Railways», JSC «Kaliningrad Sea Commercial Port», «RTSB» (TransMarine forwarder), «DB CARGO» («Mann Lines Multimodal» container line) together from Kaliningrad to Chengdu (China) sent pilot full trains with containers (1879 containers - 3778TEU), arrived by sea from the ports of Holland and Germany, as part of a development project multimode transportations through the ports of the Kaliningrad region in the communication China -



# The unique location of the port of Kaliningrad "inside the EU"



## Sea transit time

Trelleb

Rostoc

Hambu

06g

2k

rg

hour

hour

33

S

S

hours

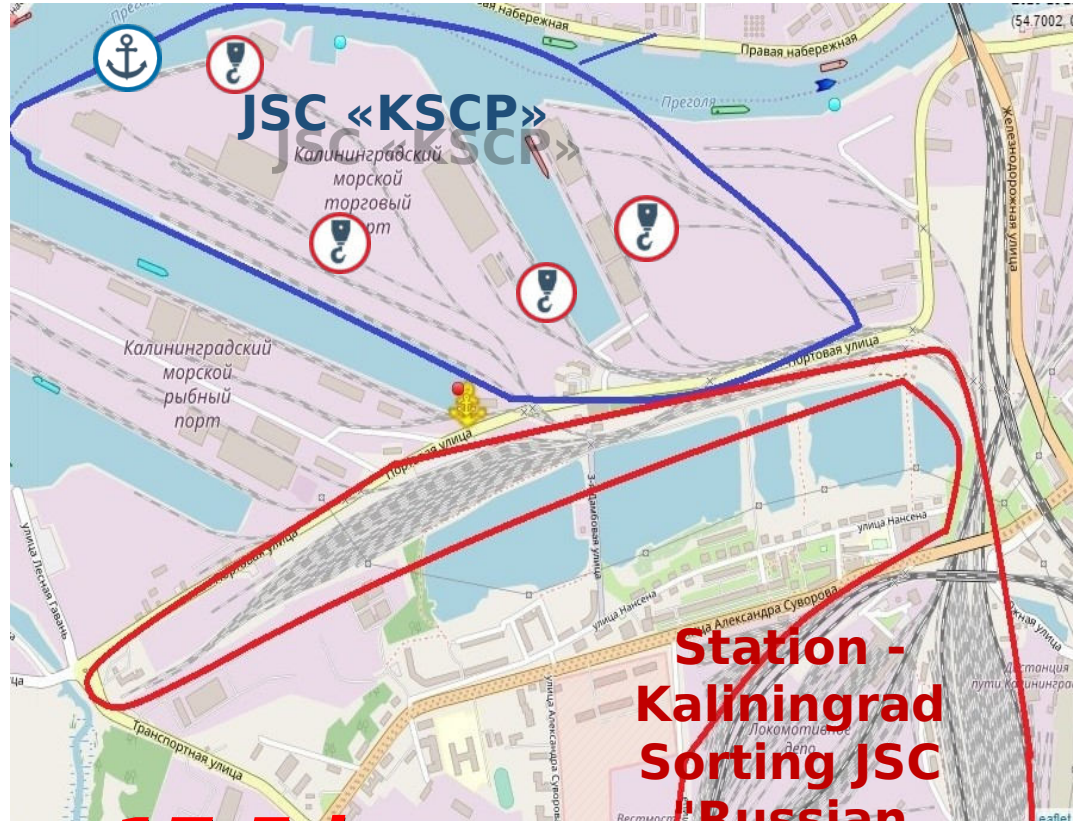






# Advantages of JSC «KSCP» for multimodal transportation

1. The shortest sea distances to the main ports of Europe;
2. The territorial proximity of the railway infrastructures of JSC Russian Railways and JSC KSCP;
3. An extensive system of its own railway tracks, with a total length of about 17.5 km. The total length of freight railway fronts for processing container trains is 2975 m, which allows processing up to 195 railway platforms for transporting 40-foot containers, if necessary, they should be left behind in anticipation of double loading /unloading operations;
4. Guaranteed loading / unloading speed of wagons - **35 containers per hour**;
5. Availability of a service of regular shipping sea containers



**17.5 km** own railway tracks

**3 km** length of freight railway fronts (up to 195 railway platforms)

**4** freight fronts handling container trains

**35** containers per hour - loading / unloading speed of wagons

Given the multimodal experience at the end of 2018 in the handling of transit containers, we can confidently state:

- the loading speed during the processing of container trains (railway platforms) reached up to 40 containers per hour;
- taking into account the experience gained in the exchange of information in electronic form between sea carriers (forwarders), customs authorities, a port operator and the Kaliningrad Railway, temporary losses on the preparation and passage of necessary transport documents were minimized.





# Sea container lines working with JSC «KSCP»



«Mann Lines Multimodal»

**Direct calls 1-2 times a week.**

main ports of call: Kaliningrad, Hamburg, Bremerhaven, Rotterdam, Gdynia,

optional: St. Petersburg, Vyborg, Kiel, Antwerp, Flushing.



MAERSK  
LINE

«MAERSK Line A/S»

«SEAGO Line A/S»

**On ships «Mann Lines Multimodal»**

«CMA CGM SA»

**On ships «Mann Lines Multimodal»**



«Mediterranean  
Shipping Company»

**On ships «Mann Lines Multimodal»**



«Hapag-Lloyd»

**Direct calls 1 time a week.**

main ports of call: Kaliningrad,  
optional: Hamburg, Riga, Tallinn, Klaipėda.





# THANKS FOR ATTENTION!



**Address: 236039, Kaliningrad, st.  
Portovaya, 24,**

**Tel .: +7 (4012) 69 24 67; Fax: +7 (4012)  
69 22 10**

commercial department: +7(4012) 69-22-48; +7(4012) 69-22-61; e-mail: [commerce@scport.ru](mailto:commerce@scport.ru)

**e-mail: [Kaliningrad@scport.ru](mailto:Kaliningrad@scport.ru) ; web:**